

What are Poulsbo RV Exclusive units?

Poulsbo RV Exclusive units are custom built recreational vehicles tailor made for our customers in the Northwest. Poulsbo RV has been building Exclusive "Poulsbo Special Editions," for over 15 years. The response to these "Special" units has been met with resounding success; and as a result we have listened to customer feedback and expanded on what was originally one special edition trailer.



RAINIER VALUE PACKAGE

- Fiberglass exterior sidewall package
- 13.5 BTU air conditioner
- Awning
- Microwave
- 3-Burner range/oven
- Wall border in galley and living area
- Foot flush toilet
- AM/FM/CD player with 2 interior and 2 exterior speakers
- TV antenna
- Double door refrigerator
- Diamond plate rock guard
- 6 Gallon gas DSI water heater
- Solid wood arched cabinet doors
- Decorative valances
- Mini blinds
- 30# LP bottles with cover
- Dark tint windows
- High rise arched galley faucet
- Tub surround
- Skylight in tub
- Skylight in galley area
- 15" Tires
- Front and rear stabilizer jacks

STANDARD FEATURES

INTERIOR FEATURES

- Decorative bedspread
- Power roof vent in bath
- Carbon monoxide detector
- Smoke detector
- Fire extinguisher
- Systems monitor panel
- Residential metal drawer glides
- Residential tile-like linoleum
- Large double bowl galley sink
- 55 Amp converter with built-in charger
- 12V Demand water system
- Residential flip sofa bed
- Cable TV hookup
- Decorative headboard
- Shower curtain (NA RG26F-DSL)
- Range hood with 12V fan and light
- Medicine cabinet with mirror

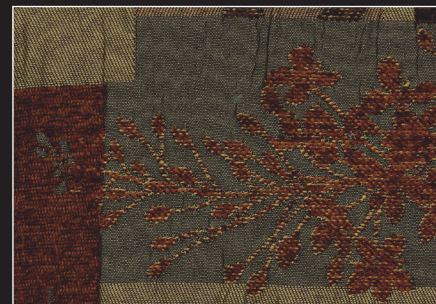
EXTERIOR FEATURES

- 5/8" Tongue and groove plywood floor
- R-7 Fiberglass insulation
- One-piece rubber roof
- Seamless rotocast wheel wells
- Leaf spring axles
- Tandem axles with electric brakes
- Rear bumper with sewer hose storage
- 30 Amp power cord
- 26" Main entry door
- Screen door with kick plate
- Flush combo entry latch/dead-bolt lock
- Protected and wrapped PolyMax underbelly
- Premium Rainier graphics package

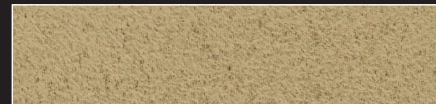
PS2 PACKAGE – AVAILABLE ON THE RG28L-GS ONLY

- LCD TV and DVD player
- Electric awning
- Aluminum rims
- Night shades
- Six panel refer insert
- Pillowtop mattress

DÉCOR CHOICES



Innocence



Spicy



Go RVing

RVIA

THOR
INDUSTRIES, INC.

ExclusiveRV
only available at POULSBO RV

TOW MORE FUN WITH YOUR HALFTON

AUBURN
3905 Auburn Way N
Auburn, WA 98002
800-568-1678

KENT
23051 Military Rd S.
Kent, WA 98032
800-562-2323

EVERETT
12218 Highway 99 S
Everett, WA 98204
800-556-3878

MOUNTVERNON
507 Jacks Rd Ln
Mount Vernon, WA 98273
888-413-1112

POULSBO
19705 Viking Ave NE
Poulsbo, WA 98370
800-768-5726

CHEHALIS
269 N. Hamilton Rd
Chehalis, WA 98532
360-740-4398

VANCOUVER
17611 NE Union Rd
Ridgefield, WA 98642
866-573-2828

www.poulsborv.com

POULSBO RV

ExclusiveRV
only available at POULSBO RV

Rainier

Poulsbo RV has partnered with Thor Industries to create the Rainier travel trailer series. Loaded with standard features that a first time customer or an experienced camper appreciates, Rainier is your best choice when it is time for your next recreational vehicle.

Designed by Thor Industries, the industry's number one manufacturer of towable recreational vehicles, the Rainier allows your family to experience the RV lifestyle with confidence, knowing that your recreational vehicle is a quality product that is built to last. Plus, Rainier is backed by Poulsbo RV and can be serviced by any of our stores.

Rainier Travel Trailers from Poulsbo RV and Thor Industries – Clearly the best travel trailer value in the industry today.



RG28L-GS shown with PS2 package.



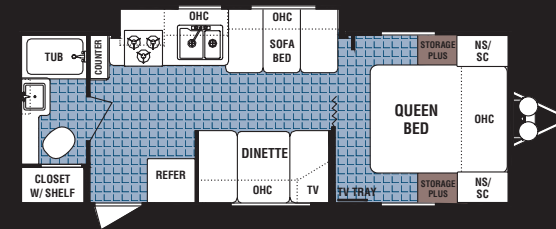
RG28L-GS shown with PS2 package.



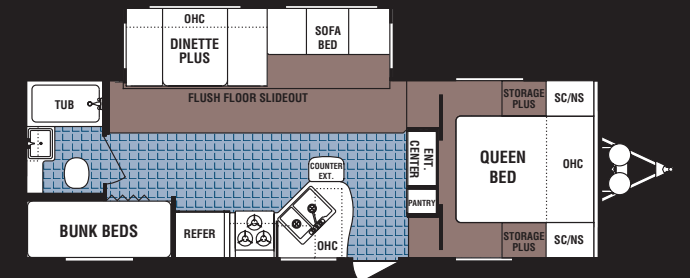
RG28L-GS shown with PS2 package.

FLOORPLANS

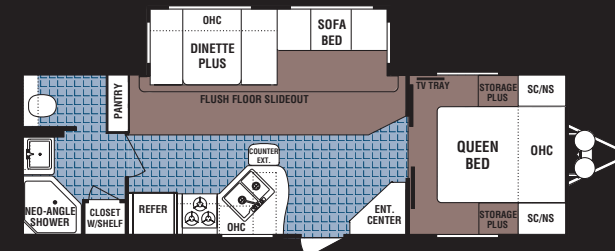
RG25C-GS



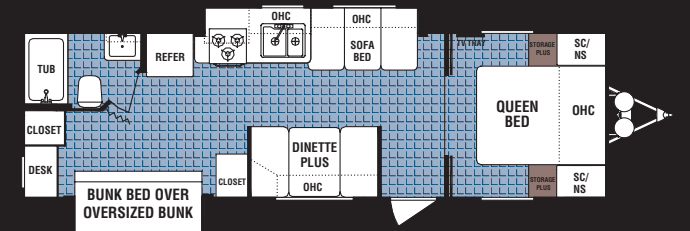
RG26B-DSL



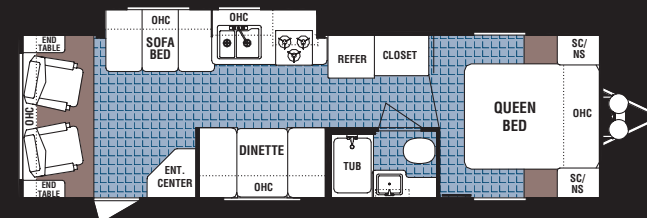
RG26F-DSL



RG28B-GS



RG28L-GS (with PS2 Package)



Weights & Specifications	RG25C-GS	RG26B-DSL	RG26F-DSL	RG28B-GS	RG28L-GS
Dry Hitch Weight*	478 lbs.	948 lbs.	837 lbs.	768 lbs.	731 lbs.
Unloaded Vehicle Weight*	5055 lbs.	6364 lbs.	6629 lbs.	6077 lbs.	5693 lbs.
GVWR	7700 lbs.	9680 lbs.	9680 lbs.	7700 lbs.	7700 lbs.
Net Cargo Capacity	2645 lbs.	3316 lbs.	3051 lbs.	1623 lbs.	2007 lbs.
Exterior Length	26' 1"	28' 5"	29' 9"	31' 3"	31' 2"
Exterior Height**	10' 3"	11' 3"	11' 3"	10' 3"	10' 3"
Exterior Width	8'	8'	8'	8'	8'
Fresh Water Tanks	30 gallons	46 gallons	46 gallons	30 gallons	30 gallons
Grey Water Tanks	42 gallons	42 gallons	42 gallons	42 gallons	42 gallons
Black Water Tanks	42 gallons	42 gallons	42 gallons	42 gallons	42 gallons
Furnace Size (BTU's)	25,000	30,000	30,000	30,000	30,000
Tire Size (all models):	ST205/75D15(C)				

Rainier Travel Trailers – Available exclusively from
Poulsbo RV and Thor Industries, Inc.

*See vehicle owner's manual for towing capacity. Vehicle loading - Every effort has been made to provide the greatest number of options for the recreational vehicle owner. Along with these choices comes the responsibility to manage the loads that are imposed by the choices that they remain within the manufacturer's specified chassis weight limits. Do not overload the recreational vehicle. Dry weight is the weight of the unit with standard run features. Some optional equipment not included. Net carrying capacity (NCC) is determined by subtracting unloaded vehicle weight (UVW) from gross vehicle weight (GVWR) and includes fluids, options and cargo. Liquid capacities and weights are approximations only.
Warning - This information is intended as a guide only. Weights of individual vehicles may vary. Consult your owner's manual for complete loading, weighing and towing instructions.
Product information, specifications, and photography in this brochure were as accurate as possible at time of printing. Photographs may contain some features that are optional on your vehicle. Since we continually strive to improve our products, actual products may differ. Prices and specifications are subject to change without notice. All capacities are approximate and dimensions are nominal. Some features shown are optional and may be different or unavailable in Canada. All logos and brand names shown in this brochure are registered trademarks of Dutchmen Mfg, Inc. Vehicles are designed for recreational use only and not intended for use as a primary residence.